

EASYTRIM REVEALS®
MITTEN

EasyTrim Reveals® Aluminum Trim

SKU: MITTEN-EASYTRIM

GAUGE

15 gauge (1.4 mm)

WARRANTY

15-Year Limited Warranty

COLOURS

3 available

PROFILES

Panel Trim · LAP Trim ·
Transition Trim (36 profiles)

EasyTrim Reveals® by Mitten is the precision aluminum trim system built exclusively for fiber cement panel and lap plank siding. Instead of time-consuming board-and-batten wood trim work, EasyTrim delivers factory-extruded 6063-T6 aluminum channels in 36 profiles that fit, fasten, and finish faster. The three system families cover every condition: Panel Trim handles the 5/16" and 7/16" board systems from sill to soffit; LAP Trim accommodates horizontal lap plank courses from starter strip to corner cap; and Transition Trim bridges the gap wherever panel and lap zones meet on the same elevation. Patented water-management geometry — including the EZ.Slope® 8° base incline and integrated weep channels — ensures every detail sheds water rather than trapping it. Available in Clear Anodized, Black Anodized, Factory Primed, and ColorMatch® finishes.

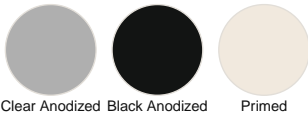
Key Features

- 36 profiles spanning Panel, LAP, and Transition systems
- 6063-T6 extruded aluminum, 15 gauge (1.4 mm) wall thickness
- EZ.Slope® 8° integrated base slope for positive water drainage
- 4 finishes: Clear Anodized · Black Anodized · Primed · ColorMatch®
- 15-Year Limited Warranty
- Compatible with all major fibre cement manufacturers (Allura, James Hardie, Nichiha)
- Patented water-management features — drainage channels and weep slots
- Adjustable multi-angle profiles for bay windows and non-90° conditions
- 10' (3.05 m) standard lengths — less waste, fewer joints

Available Colours

EASYTRIM FINISHES

3 colours



Clear Anodized Black Anodized Primed

Profiles & Specifications

ET-P-1PC-SQ-OC

1-Piece Square Outside Corner — Panel

Single-piece square outside corner trim for fiber cement panel siding. Provides a sharp, clean 90° outside corner transition. Installs in one step over panel edge.



System	Panel (5/16" fibre cement board siding)
Length	10' (3.05 m)
Material	6063-T6 extruded aluminum, 15 gauge (1.4 mm)
Finishes	Clear Anodized · Black Anodized · Primed · ColorMatch®

ET-P-RND-OC

Round Outside Corner — Panel

Round outside corner trim for fiber cement panel siding. Softer radius profile suits contemporary and craftsman-style exteriors.



System	Panel (5/16" fibre cement board siding)
Length	10' (3.05 m)
Material	6063-T6 extruded aluminum, 15 gauge (1.4 mm)
Finishes	Clear Anodized · Black Anodized · Primed · ColorMatch®

ET-P-2PC-SQ-OC

2-Piece Square Outside Corner — Panel

Two-piece square outside corner system for fiber cement panel siding. The two-piece design allows independent installation of each side and accommodates minor framing variations.



System	Panel (5/16" fibre cement board siding)
Length	10' (3.05 m)
Material	6063-T6 extruded aluminum, 15 gauge (1.4 mm)
Finishes	Clear Anodized · Black Anodized · Primed · ColorMatch®

ET-P-ARR-OC

Arrow Outside Corner — Panel

Arrow-profile outside corner trim for fiber cement panel siding. Creates a distinctive angular outside corner detail.



System	Panel (5/16" fibre cement board siding)
Length	10' (3.05 m)
Material	6063-T6 extruded aluminum, 15 gauge (1.4 mm)
Finishes	Clear Anodized · Black Anodized · Primed · ColorMatch®

ET-P-X-OC

X Outside Corner — Panel

X-profile outside corner trim for fiber cement panel siding. Provides a shadow line on both faces at the corner for a defined architectural detail.



System	Panel (5/16" fibre cement board siding)
Length	10' (3.05 m)
Material	6063-T6 extruded aluminum, 15 gauge (1.4 mm)
Finishes	Clear Anodized · Black Anodized · Primed · ColorMatch®

ET-P-MA-OC

Multi-Angle Outside Corner — Panel

Adjustable multi-angle outside corner for fiber cement panel siding on bay windows, angled walls, or non-90° corners. Pivots to fit a wide range of angles.

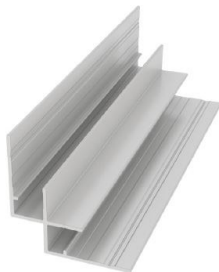


System	Panel (5/16" fibre cement board siding)
Length	10' (3.05 m)
Material	6063-T6 extruded aluminum, 15 gauge (1.4 mm)
Finishes	Clear Anodized · Black Anodized · Primed · ColorMatch®

ET-P-IC

Inside Corner — Panel

Inside corner trim for fiber cement panel siding. Provides a clean inside corner where two panel faces meet at 90°.



System	Panel (5/16" fibre cement board siding)
Length	10' (3.05 m)
Material	6063-T6 extruded aluminum, 15 gauge (1.4 mm)
Finishes	Clear Anodized · Black Anodized · Primed · ColorMatch®

ET-P-2PC-VU

2-Piece Vertical U — Panel

Two-piece vertical U-channel for fiber cement panel siding. Used at vertical panel butt joints, windows, and door jambs. The two-piece design captures panel edges on both sides.



System	Panel (5/16" fibre cement board siding)
Length	10' (3.05 m)
Material	6063-T6 extruded aluminum, 15 gauge (1.4 mm)
Finishes	Clear Anodized · Black Anodized · Primed · ColorMatch®

ET-P-VWS-J

Vertical Window Sill J — Panel

Vertical window sill J-trim for fiber cement panel siding. Provides a weather-tight termination at window sill and head with integrated J-channel for panel edge.



System	Panel (5/16" fibre cement board siding)
Length	10' (3.05 m)
Material	6063-T6 extruded aluminum, 15 gauge (1.4 mm)
Finishes	Clear Anodized · Black Anodized · Primed · ColorMatch®

ET-P-2PC-VWS-U

2-Piece Vertical Window Sill U — Panel

Two-piece vertical window sill U-channel for fiber cement panel siding. Accommodates panels on both sides of a window opening with a single, streamlined trim piece.



System	Panel (5/16" fibre cement board siding)
Length	10' (3.05 m)
Material	6063-T6 extruded aluminum, 15 gauge (1.4 mm)
Finishes	Clear Anodized · Black Anodized · Primed · ColorMatch®

ET-P-2PC-VTF

2-Piece Vertical Termination F — Panel

Two-piece vertical F-channel termination for fiber cement panel siding. Used where panels terminate at an adjacent material such as masonry, stucco, or a different cladding zone.



System	Panel (5/16" fibre cement board siding)
Length	10' (3.05 m)
Material	6063-T6 extruded aluminum, 15 gauge (1.4 mm)
Finishes	Clear Anodized · Black Anodized · Primed · ColorMatch®

ET-P-HZ

Horizontal Z — Panel

Horizontal Z-bar reveal for fiber cement panel siding. Creates a horizontal shadow line between panel rows, adding depth and defining coursing lines. Features integrated water deflection.

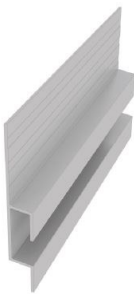


System	Panel (5/16" fibre cement board siding)
Length	10' (3.05 m)
Material	6063-T6 extruded aluminum, 15 gauge (1.4 mm)
Finishes	Clear Anodized · Black Anodized · Primed · ColorMatch®

ET-P-HRH

Horizontal Reveal H — Panel

Horizontal H-channel reveal for fiber cement panel siding. Creates an open reveal shadow line between panel courses — both panel edges are captured for a finished appearance.



System	Panel (5/16" fibre cement board siding)
Length	10' (3.05 m)
Material	6063-T6 extruded aluminum, 15 gauge (1.4 mm)
Finishes	Clear Anodized · Black Anodized · Primed · ColorMatch®

ET-P-HSJ

Horizontal Soffit J — Panel

Horizontal soffit J-channel for fiber cement panel siding. Used where the panel field meets the soffit or eave. Captures the top panel edge while allowing drainage.



System	Panel (5/16" fibre cement board siding)
Length	10' (3.05 m)
Material	6063-T6 extruded aluminum, 15 gauge (1.4 mm)
Finishes	Clear Anodized · Black Anodized · Primed · ColorMatch®

ET-P-HBB

Horizontal Base B — Panel

Horizontal base B-trim for fiber cement panel siding. Provides a weather-resistant base termination at grade or at the sill plate, with integrated drip edge to direct water away from the wall.



System	Panel (5/16" fibre cement board siding)
Length	10' (3.05 m)
Material	6063-T6 extruded aluminum, 15 gauge (1.4 mm)
Finishes	Clear Anodized · Black Anodized · Primed · ColorMatch®

ET-P-2PC-SF

2-Piece Soffit F — Panel

Two-piece soffit F-channel for fiber cement panel siding. The two-part system installs independently on wall and soffit faces, then snaps together to capture the panel edge at the eave.



System	Panel (5/16" fibre cement board siding)
Length	10' (3.05 m)
Material	6063-T6 extruded aluminum, 15 gauge (1.4 mm)
Finishes	Clear Anodized · Black Anodized · Primed · ColorMatch®

ET-P-2PC-WSJ

2-Piece Window Sill J — Panel

Two-piece window sill J-channel for fiber cement panel siding. Installed at window heads and sills to capture and waterproof the panel edge around window openings.



System	Panel (5/16" fibre cement board siding)
Length	10' (3.05 m)
Material	6063-T6 extruded aluminum, 15 gauge (1.4 mm)
Finishes	Clear Anodized · Black Anodized · Primed · ColorMatch®

ET-P-WDC

1-3/8" Window Drip Cap Flashing

Window drip cap flashing with 1-3/8" projection for fiber cement panel siding. Installed above window and door heads to direct water away from the opening and onto the siding face.

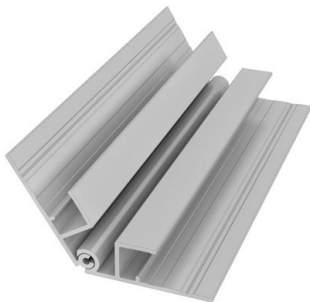


System	Panel (5/16" fibre cement board siding)
Projection	1-3/8"
Length	10' (3.05 m)
Material	6063-T6 extruded aluminum, 15 gauge (1.4 mm)
Finishes	Clear Anodized · Black Anodized · Primed · ColorMatch®

EZ18

Multi-Angle Inside Corner — Panel (EZ18)

Adjustable multi-angle inside corner for fiber cement panel siding. Accommodates non-90° inside corners on angled walls, dormers, and bay windows. Pivots to fit a range of angles.

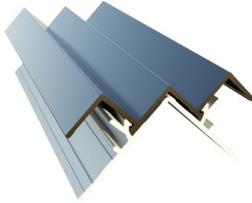


System	Panel (5/16" fibre cement board siding)
Length	10' (3.05 m)
Material	6063-T6 extruded aluminum, 15 gauge (1.4 mm)
Finishes	Clear Anodized · Black Anodized · Primed · ColorMatch®

EZ62

2-Piece Square Outside Corner — 7/16" Panel (EZ62)

2-piece square outside corner specifically designed for 7/16" thick fiber cement panel siding such as Allura. The deeper channel accommodates the additional panel thickness without visible gaps.

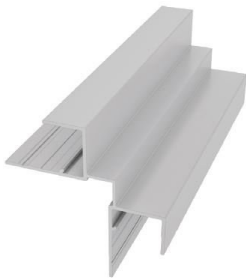


System	Panel (7/16" fibre cement board siding)
Length	10' (3.05 m)
Material	6063-T6 extruded aluminum, 15 gauge (1.4 mm)
Finishes	Clear Anodized · Black Anodized · Primed · ColorMatch®

ET-L-1PC-SQ-OC

1-Piece Square Outside Corner — LAP

Single-piece square outside corner for fiber cement lap plank siding. The channel accommodates the lapped profile at outside corners, providing a clean termination.



System	LAP (fiber cement lap plank siding)
Length	10' (3.05 m)
Material	6063-T6 extruded aluminum, 15 gauge (1.4 mm)
Finishes	Clear Anodized · Black Anodized · Primed · ColorMatch®

ET-L-ARR-OC

Arrow Outside Corner — LAP

Arrow-profile outside corner for fiber cement lap plank siding. Creates a shadow line on both faces at outside corners.



System	LAP (fiber cement lap plank siding)
Length	10' (3.05 m)
Material	6063-T6 extruded aluminum, 15 gauge (1.4 mm)
Finishes	Clear Anodized · Black Anodized · Primed · ColorMatch®

ET-L-X-OC

X Outside Corner — LAP

X-profile outside corner for fiber cement lap plank siding. Provides a defined architectural corner detail with shadow reveals on both faces.



System	LAP (fiber cement lap plank siding)
Length	10' (3.05 m)
Material	6063-T6 extruded aluminum, 15 gauge (1.4 mm)
Finishes	Clear Anodized · Black Anodized · Primed · ColorMatch®

ET-L-MA-OC

Multi-Angle Outside Corner — LAP

Adjustable multi-angle outside corner for fiber cement lap plank siding. For bay windows, angled walls, and non-90° conditions.

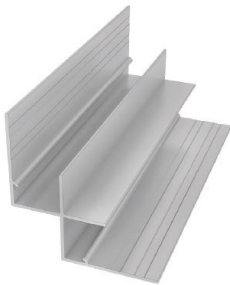


System	LAP (fiber cement lap plank siding)
Length	10' (3.05 m)
Material	6063-T6 extruded aluminum, 15 gauge (1.4 mm)
Finishes	Clear Anodized · Black Anodized · Primed · ColorMatch®

ET-L-IC

Inside Corner — LAP

Inside corner trim for fiber cement lap plank siding. Provides a weather-tight inside corner termination for lapped plank profiles.



System	LAP (fiber cement lap plank siding)
Length	10' (3.05 m)
Material	6063-T6 extruded aluminum, 15 gauge (1.4 mm)
Finishes	Clear Anodized · Black Anodized · Primed · ColorMatch®

ET-L-MA-IC

Multi-Angle Inside Corner — LAP

Adjustable multi-angle inside corner for fiber cement lap plank siding at non-standard angles. Accommodates bay windows, dormers, and irregular wall geometry.



System	LAP (fiber cement lap plank siding)
Length	10' (3.05 m)
Material	6063-T6 extruded aluminum, 15 gauge (1.4 mm)
Finishes	Clear Anodized · Black Anodized · Primed · ColorMatch®

ET-L-2PC-VU

2-Piece Vertical U — LAP

Two-piece vertical U-channel for fiber cement lap plank siding. Used at vertical butt joints in the plank field and around window/door jambs.



System	LAP (fiber cement lap plank siding)
Length	10' (3.05 m)
Material	6063-T6 extruded aluminum, 15 gauge (1.4 mm)
Finishes	Clear Anodized · Black Anodized · Primed · ColorMatch®

ET-L-VWS-J

Vertical Window Sill J — LAP

Vertical window sill J-channel for fiber cement lap plank siding. Captures lap plank edges at window sills and heads with integrated weather protection.



System	LAP (fiber cement lap plank siding)
Length	10' (3.05 m)
Material	6063-T6 extruded aluminum, 15 gauge (1.4 mm)
Finishes	Clear Anodized · Black Anodized · Primed · ColorMatch®

ET-L-HBZ

Horizontal Base Z — LAP

Horizontal base Z-trim for fiber cement lap plank siding. Used at the bottom course termination. The Z profile deflects water away from the wall base and provides a clean starting edge.



System	LAP (fiber cement lap plank siding)
Length	10' (3.05 m)
Material	6063-T6 extruded aluminum, 15 gauge (1.4 mm)
Finishes	Clear Anodized · Black Anodized · Primed · ColorMatch®

ET-L-PVS

Perforated Vented LAP Starter Strip

Perforated starter strip for the bottom course of fiber cement lap plank siding. The vented perforations allow air circulation behind the cladding while the starter strip sets the sill angle for the first lap.

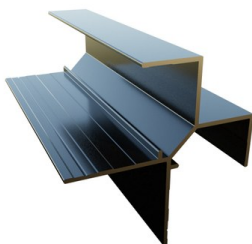


System	LAP (fiber cement lap plank siding)
Length	10' (3.05 m)
Material	6063-T6 extruded aluminum, 15 gauge (1.4 mm)
Finishes	Clear Anodized · Black Anodized · Primed · ColorMatch®

EZ84

1" Square Outside Corner — LAP (EZ84)

1" square outside corner specifically designed for 1" thick fiber cement lap plank siding. The deeper channel ensures full coverage of thicker plank profiles at outside corners.



System	LAP (1" thick fibre cement lap plank)
Length	10' (3.05 m)
Material	6063-T6 extruded aluminum, 15 gauge (1.4 mm)
Finishes	Clear Anodized · Black Anodized · Primed · ColorMatch®

ET-T-2PC-OC

2-Piece Outside Corner — Transition

Two-piece outside corner transition trim for transitioning between two different fiber cement siding types (panel-to-lap or panel-to-panel at a corner). Accommodates different material thicknesses on each leg.



System	Transition (panel-to-lap or mixed cladding)
Length	10' (3.05 m)
Material	6063-T6 extruded aluminum, 15 gauge (1.4 mm)
Finishes	Clear Anodized · Black Anodized · Primed · ColorMatch®

ET-T-MA-OC

Multi-Angle Outside Corner — Transition

Adjustable multi-angle outside corner transition trim. For non-90° transitions between different cladding systems at outside corners.

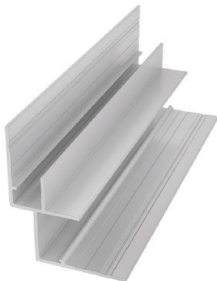


System	Transition (panel-to-lap or mixed cladding)
Length	10' (3.05 m)
Material	6063-T6 extruded aluminum, 15 gauge (1.4 mm)
Finishes	Clear Anodized · Black Anodized · Primed · ColorMatch®

ET-T-IC

Inside Corner — Transition

Inside corner transition trim for transitioning between two different cladding systems at 90° inside corners.



System	Transition (panel-to-lap or mixed cladding)
Length	10' (3.05 m)
Material	6063-T6 extruded aluminum, 15 gauge (1.4 mm)
Finishes	Clear Anodized · Black Anodized · Primed · ColorMatch®

ET-T-MA-IC

Multi-Angle Inside Corner — Transition

Adjustable multi-angle inside corner transition trim. For non-90° inside corner transitions between different cladding zones.



System	Transition (panel-to-lap or mixed cladding)
Length	10' (3.05 m)
Material	6063-T6 extruded aluminum, 15 gauge (1.4 mm)
Finishes	Clear Anodized · Black Anodized · Primed · ColorMatch®

ET-T-2PC-VU

2-Piece Vertical U — Transition

Two-piece vertical U-channel transition trim for horizontal transitions between panel and lap zones on the same wall plane.



System	Transition (panel-to-lap or mixed cladding)
Length	10' (3.05 m)
Material	6063-T6 extruded aluminum, 15 gauge (1.4 mm)
Finishes	Clear Anodized · Black Anodized · Primed · ColorMatch®

Installation Guide

- 1 EasyTrim Reveals® is compatible with every major fiber cement manufacturer's panel and lap plank siding systems, including Allura, James Hardie, and Nichiha.
- 2 All profiles are extruded from 6063-T6 aluminum alloy at 15 gauge (1.4 mm) wall thickness; standard length is 10' (3.05 m) per piece.
- 3 Available finishes: Clear Anodized, Black Anodized, Factory Primed (field-paint within manufacturer's specified window), and ColorMatch® custom colour to match any painted siding finish.
- 4 Fasten trim profiles to structural framing through slots at maximum 16" (406 mm) on centre using corrosion-resistant screws or nails; do not drive fasteners rigid — leave 1/32" (1 mm) for thermal expansion.
- 5 EZ.Slope® base profiles include an integrated 8° slope to direct water away from the wall; install with slope angled toward exterior.
- 6 All profiles include patented water-management features (drainage channels, weep slots, or positive laps) — orient pieces per the installation guide to ensure water drains outward.
- 7 Lap/overlap profile joints by a minimum of 1" (25 mm); stagger vertical joints a minimum of 2 courses from adjacent profile joints.
- 8 Caulk all profile-to-window and profile-to-door interfaces with a siliconised acrylic or neutral-cure silicone rated for exterior aluminum and fiber cement contact.
- 9 Install a continuous self-adhering flashing membrane behind all corner and base trim profiles before installing fiber cement panels.
- 10 Do not use acid-based sealants on aluminum; use pH-neutral products only to prevent surface oxidation under the anodize coating.
- 11 Multi-Angle profiles (EZ18 and equivalents) pivot between approximately 45° and 135°; set to the required angle and tighten the pivot fastener before fastening to the wall.
- 12 ColorMatch® finish lead time is typically 4–6 weeks; order trim and siding simultaneously to ensure colour consistency across the project.
- 13 For Allura 7/16" panels use EZ62 outside corner; for 1" lap planks use EZ84 outside corner — standard 5/16" profiles will not fully capture thicker materials.
- 14 Store profiles flat and off the ground; do not store in direct sunlight for extended periods to prevent finish degradation before installation.
- 15 Contact your local Mitten branch for box quantities, pricing, and regional availability of ColorMatch® finishes.



MITTEN

Ready to order?

Submit your spec list and we'll respond with pricing and availability - usually within one business day.

WEB

promaterials.ca

PHONE

(905) 836-7272

EMAIL

info@promaterials.ca

ADDRESS

Unit 5, 1235 Journey's End Cir, Newmarket, ON