

40 SERIES VINYL SIDING  
MITTEN

# Mitten Oregon Pride 40 Series Vinyl Siding

SKU: MITT-VS-OP

**GAUGE**

0.040" (1.02 mm)

**WIND**

140 mph / 225 km/h

**WARRANTY**

Lifetime Non-Prorated  
Transferable + Colour  
Fade Guarantee

**COLOURS**

14 available

**PROFILES**

4 Profiles: D4H / D4DL /  
D4.5DL / D5V

Mitten Oregon Pride 40 Series is a versatile vinyl siding system available in four distinct profiles and 14 carefully curated colours. CCMC-accepted and PEPA-certified, it delivers 140 mph wind resistance with a lifetime non-prorated transferable warranty and a colour fade guarantee.

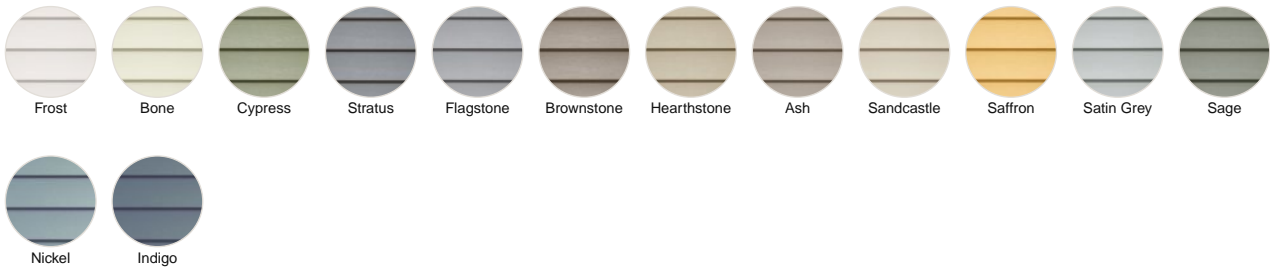
## Key Features

- 4 profiles including Dutchlap and Vertical
- Wind resistance up to 140 mph (D4H/D4DL/D4.5DL)
- Lifetime Non-Prorated Transferable warranty
- CCMC Acceptance No. 06419L
- 14 colours
- 0.040" (1.02 mm) gauge
- Low-Gloss Cedar Grain finish
- Lifetime Colour Fade Guarantee
- PEPA Certified

## Available Colours

### NATURAL STANDARD

14 colours



## Profiles & Specifications

### D4H

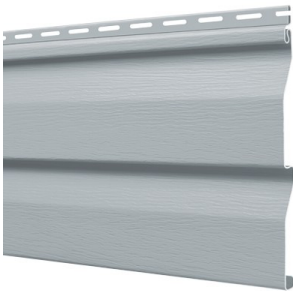
Double 4" Horizontal



Length	12'6" (3.81 m)
Height / Width	8" (20.32 cm)
Thickness	0.040" (1.02 mm)
Panels / Box	24
Coverage	200 sq. ft. (18.58 m <sup>2</sup> )
Wind Resistance	140 mph
Installation	Horizontal

### D4DL

Double 4" Dutchlap



Length	12'6" (3.81 m)
Height / Width	8" (20.32 cm)
Thickness	0.040" (1.02 mm)
Panels / Box	24
Coverage	200 sq. ft. (18.58 m <sup>2</sup> )
Wind Resistance	140 mph
Installation	Horizontal

### D45DL

Double 4.5" Dutchlap



Length	12'1" (3.68 m)
Height / Width	9" (22.86 cm)
Thickness	0.040" (1.02 mm)
Panels / Box	22
Coverage	200 sq. ft. (18.58 m <sup>2</sup> )
Wind Resistance	140 mph
Installation	Horizontal

D5V

Double 5" Vertical



Length	12' (3.66 m)
Height / Width	10" (25.4 cm)
Thickness	0.040" (1.02 mm)
Panels / Box	20
Coverage	200 sq. ft. (18.58 m <sup>2</sup> )
Wind Resistance	N/A
Installation	Vertical

\* Available in Frost, Bone, Stratus, Brownstone, Hearthstone only

## Certifications & Testing Standards

Mitten Oregon Pride 40 Series Vinyl Siding meets or exceeds the following Canadian and international performance standards.

● Impact Class 1 CAN/CGSB-41.24-95 "e80.1 J/m
● Impact Class 2 "e266.9 J/m
● Tensile ASTM D-638 — 8,200 PSI
● Modulus 370,000 PSI
● Flame Spread ASTM E-84 Class 1
● Shrinkage "d3% ASTM D-1042
● CCMC Acceptance No. 06419L
● ASTM D-3679
● UBC 14-2
● AS/NZS 4256 Type B
● PEPA Certified
● Wind Load 140 mph / 225 km/h (D4H / D4DL / D4.5DL)

## Compatible Accessories

<b>5/8" J-Channel</b> —	<b>7/8" J-Channel</b> —	<b>H-Trim</b> —
<b>Finish Trim</b> —	<b>Drip Cap</b> —	<b>Inside Corner Post</b> —
<b>3" Outside Corner Post</b> 10'	<b>3" Outside Corner Post</b> 12'	<b>5.5" Traditional Outside Corner Post</b> 20'
<b>5.5" Fluted Outside Corner Post</b> 20'	<b>Recessed Window &amp; Door Trim</b> —	<b>Starter Strip</b> —
<b>3.5" Window &amp; Door Trim</b> —	<b>Window Casing Trim</b> —	

## Profile Availability by Colour

	D45DL	D4DL	D4H	D5V
Frost	•	•	•	•
Bone	•	•	•	•
Cypress	•	•	•	–
Stratus	•	•	•	•
Flagstone	•	•	•	–
Brownstone	•	•	•	•
Hearthstone	•	•	•	•
Ash	•	–	•	–
Sandcastle	•	–	•	–
Saffron	•	–	•	–
Satin Grey	•	–	•	–
Sage	•	–	•	–
Nickel	•	•	•	–
Indigo	•	–	•	–



# MITTEN

## Ready to order?

Submit your spec list and we'll respond with pricing and availability - usually within one business day.

### WEB

[promaterials.ca](http://promaterials.ca)

### PHONE

(905) 836-7272

### EMAIL

[info@promaterials.ca](mailto:info@promaterials.ca)

### ADDRESS

Unit 5, 1235 Journey's End Cir, Newmarket, ON