

RESTORATION MILLWORK®
CERTAINTEED

Restoration Millwork® Exterior PVC Trim

SKU: CT-RM-EXTERIOR-PVC-TRIM

WARRANTY

25-year limited warranty

PROFILES

Crown Mouldings · Casings · Sills · Drip Cap · Base Cap · Shingle
Mould · Rake Mould · Quarter Round · Baluster · Garage Door Stop ·
24 profiles total

Restoration Millwork® Exterior PVC Trim by CertainTeed offers 24 purpose-built profiles for finishing, detailing, and decorating home exteriors. From Crown Mouldings and Casings to Historic Sills, Drip Caps, Shingle Moulds, Quarter Round, and Garage Door Stops, every profile ships in 16-foot lengths of natural white cellular PVC — ready to install or paint. FinishedEdge™ heat-sealed edges keep profiles clean, while TrueTexture™ woodgrain delivers the look of real wood without the maintenance. Fully paintable to match any exterior colour scheme. Class A Flame Spread rated, ICC and CCMC compliant, and backed by a 25-year limited warranty.

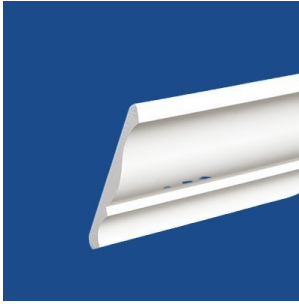
Key Features

- Natural white, ready to install — paintable to match any exterior colour
- TrueTexture™ woodgrain finish molded from real boards; smooth reverse side
- Cuts and mills with traditional woodworking tools
- Meets ICC and CCMC code requirements
- 25-year limited warranty
- Profiles include Crown, Casing, Sill, Drip Cap, Base Cap, Shingle Mould, Rake Mould, Quarter Round, Baluster, and more
- FinishedEdge™ heat-sealed edges prevent dirt accumulation
- Highly resistant to UV yellowing — no painting required for natural white finish
- Class A (Class 1) Flame Spread Classification
- NAHB Research Center Green Approved
- 24 specialty profiles for exterior finishing and decoration
- Most profiles available in 16 ft. lengths

Profiles & Specifications

640000

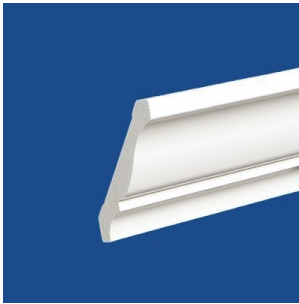
PVC Crown 45 16'



Length	16'
Height / Width	5-1/4"
Thickness	9/16"

640100

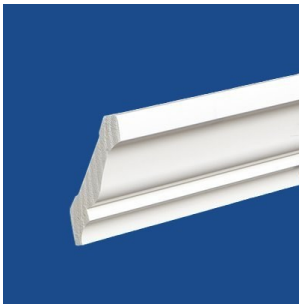
PVC Crown 47 16'



Length	16'
Height / Width	4-5/8"
Thickness	9/16"

640200

PVC Crown 52 16'



Length	16'
Height / Width	2-3/4"
Thickness	9/16"

649400

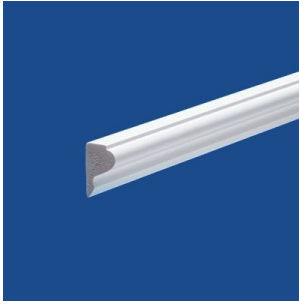
PVC Crown 49T 16'



Length	16'
Height / Width	3-5/8"
Thickness	9/16"

640300

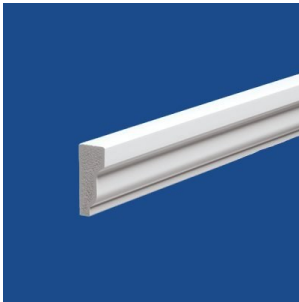
PVC Base Cap 16'



Length	16'
Height / Width	1-1/8"
Thickness	11/16"

640400

PVC Shingle Mould 16'



Length	16'
Height / Width	1-5/8"
Thickness	11/16"

640500

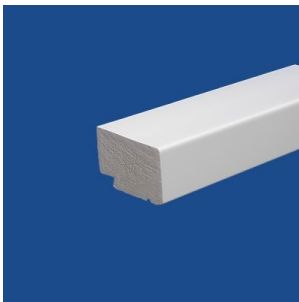
PVC Rake Mould 16'



Length	16'
Height / Width	2"
Thickness	1-1/16"

640600

PVC Historic Sill, White



Length	16'
Height / Width	2-13/16"
Thickness	1-3/4"

640700

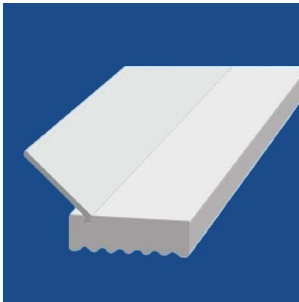
PVC Bed Mould (WM-75) 16'



Length	16'
Height / Width	1-5/8"
Thickness	9/16"

642000

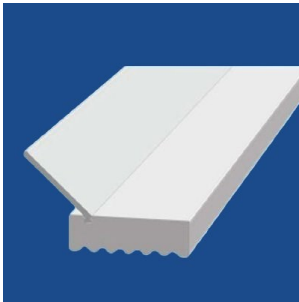
PVC Garage Door Stop 7' White Embossed



Length	7'
Height / Width	1-15/16"
Thickness	7/16"

640800

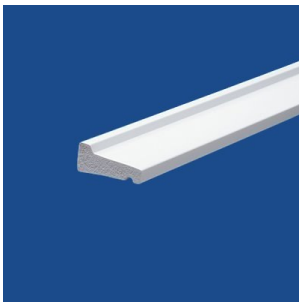
PVC Garage Door Stop 16' White Embossed



Length	16'
Height / Width	1-15/16"
Thickness	7/16"

640900

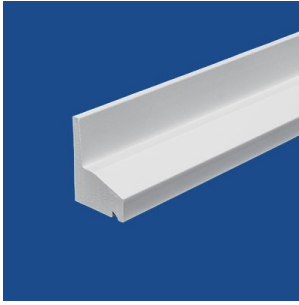
PVC Drip Cap (WM-197) 16'



Length	16'
Height / Width	1-5/8"
Thickness	11/16"

641000

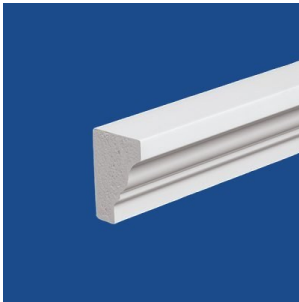
PVC Water Table 16' Celuka



Length	16'
Height / Width	2-3/4"
Thickness	2"

641100

PVC Rams Crown 16'



Length	16'
Height / Width	2"
Thickness	1-13/64"

641200

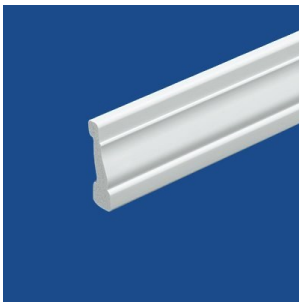
PVC RB3 Casing 16'



Length	16'
Height / Width	3-7/16"
Thickness	1-7/64"

641300

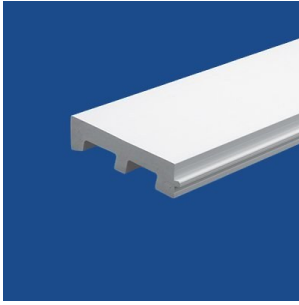
PVC Casing (WM-356) 16'



Length	16'
Height / Width	3-7/16"
Thickness	11/16"

641400

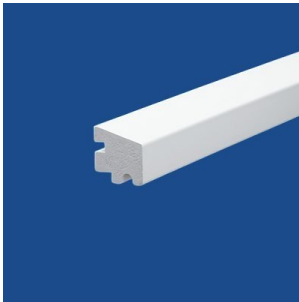
PVC Sill 16'



Length	16'
Height / Width	5"
Thickness	1-1/4"

641500

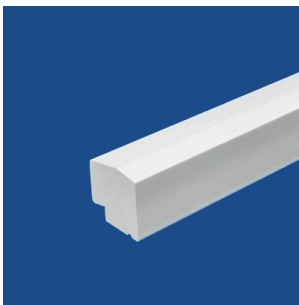
PVC Sill Nose 16' Crated



Length	16'
Height / Width	1-5/8"
Thickness	1-3/8"

641600

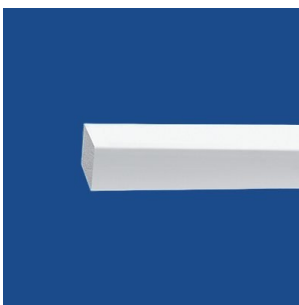
PVC New England Sill, White



Length	16'
Height / Width	2-1/32"
Thickness	1-3/4"

641700

PVC Inside Corner 10'



Length	10'
Height / Width	1-1/4"
Thickness	1-1/4"

641800

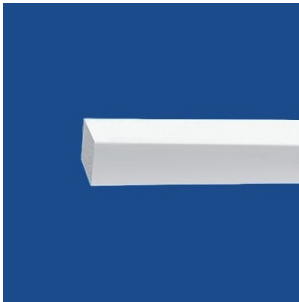
PVC Quarter Round 16'



Length	16'
Height / Width	3/4"
Thickness	3/4"

641900

PVC Baluster 1-1/2" x 1-1/2" 10' Crated



Length	10'
Height / Width	1-1/2"
Thickness	1-1/2"

642100

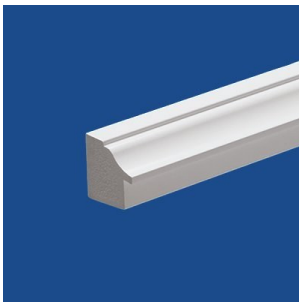
PVC Back Band Casing 16'



Length	16'
Height / Width	4-1/2"
Thickness	1-3/16"

642200

PVC Adjustable Back Band 16'



Length	16'
Height / Width	4-1/2"
Thickness	1-3/16"

Certifications & Testing Standards

Restoration Millwork® Exterior PVC Trim meets or exceeds the following Canadian and international performance standards.

- Flame Spread ASTM E84 — Class A (Class 1)
- Code Compliance — ICC and CCMC
- NAHB Research Center Green Approved
- CCMC 06419L

Installation Guide

- 1 Compatible with traditional woodworking tools — saws, routers, nail guns, and standard finishing equipment
- 2 PVC cement required for all mitre and scarf joints to manage thermal expansion and contraction
- 3 Recommended adhesives: Extreme PVC Trim Welder® or Partite® Adhesive for joint bonding
- 4 Remove protective face film only after installation to prevent scratching during handling
- 5 Not designed or tested for load-bearing or structural applications
- 6 Care: clean with soft bristle brush and soapy water; use a PVC-safe cleaner for stubborn stains; test any cleaner on an inconspicuous area before full use
- 7 Full installation guide and video tutorials available at [certainteed.com](https://www.certainteed.com)



Ready to order?

Submit your spec list and we'll respond with pricing and availability - usually within one business day.

WEB

promaterials.ca

PHONE

(905) 836-7272

EMAIL

info@promaterials.ca

ADDRESS

Unit 5, 1235 Journey's End Cir, Newmarket, ON